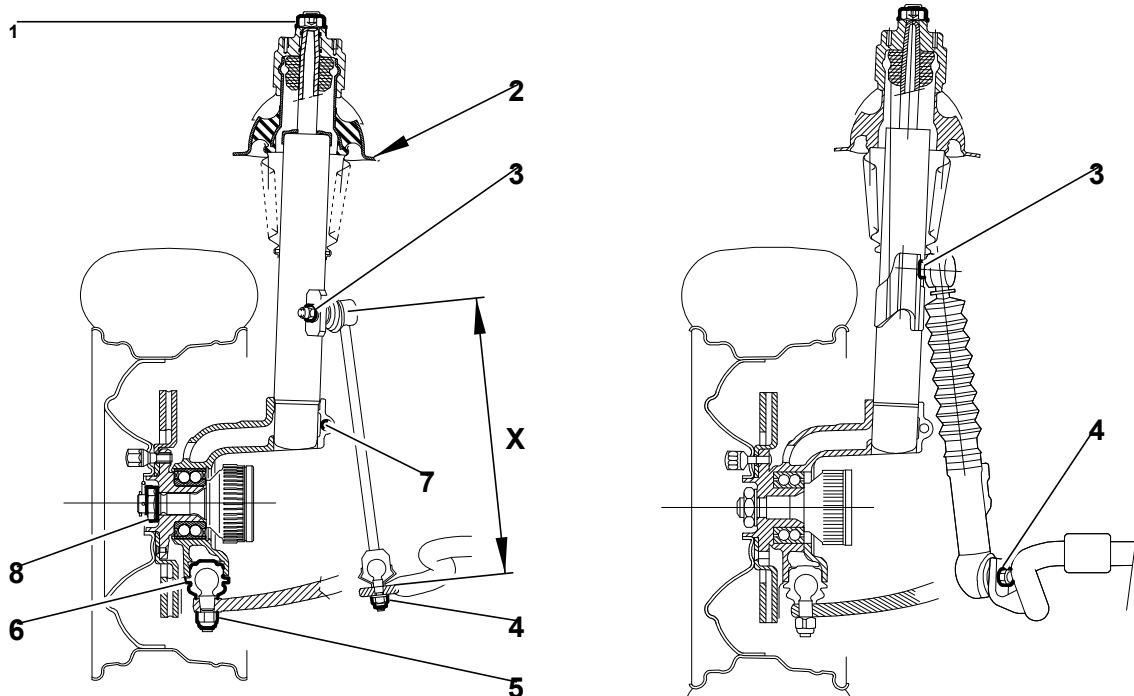


data : suspension

1 Front suspension



- Fig. : 1 -

Length of link rod : $X = 323 \pm 1$ mm.

Tightening torques :

- (1) suspension sphere upper fixing : 6,5 m.daN (*)
- (2) suspension sphere fixing to the bodyshell : 2,5 m.daN
- (3) link rod upper fixing : up to number OPR 6615 ; ball-joint stem 10 mm in \varnothing : 4 m.daN
- (3) link rod upper fixing : from OPR 6616 number ; ball-joint stem 12 mm in \varnothing : 7 m.daN
- (3) SC.CAR ram upper fixing : 7 m.daN
- (4) link rod lower fixing : up to number OPR 6615 ; ball-joint stem 10 mm in \varnothing : 4 m.daN
- (4) link rod lower fixing : from OPR 6616 number ; ball-joint stem 12 mm in \varnothing : 7 m.daN
- (4) SC.CAR ram lower fixing : 7 m.daN
- (5) ball-joint fixing : 4,5 m.daN
- (6) ball-joint fixing to swivel : 25 m.daN
- (7) suspension sphere fixing to swivel : 5,5 m.daN
- (8) driveshaft fixing to hub : 32 m.daN

(*) : coat with threadlock LOCTITE FRENETANCH.

1.1 Data : saloon until Model Year 96

Vehicle.	Suspension piston Ø (in mm).	Anti-roll bar Ø (in mm).	Hydractive suspension.		Suspension sphere reference.		Hydraulic stop.
			Without.	With.	Manual steering.	Power assisted steering.	
					Castor 1 °.	Castor 3 °.	
1.6i.	40.	22.	X.		..LC01.	..LC08.	Without.
1.8i.			X.				
2.0i.			X.			..LC02.	With.
				X.		..LC03.	
1.9D.			X.			..LC08.	Without.
1.9 Turbo D.			X.			..LC02.	With.
				X.		..LC03.	
16v except SC.CAR.			23.		X.		
SC.CAR.	28.		X.		..LC06.		

1.2 Data : saloon from the 96 Model Year onwards

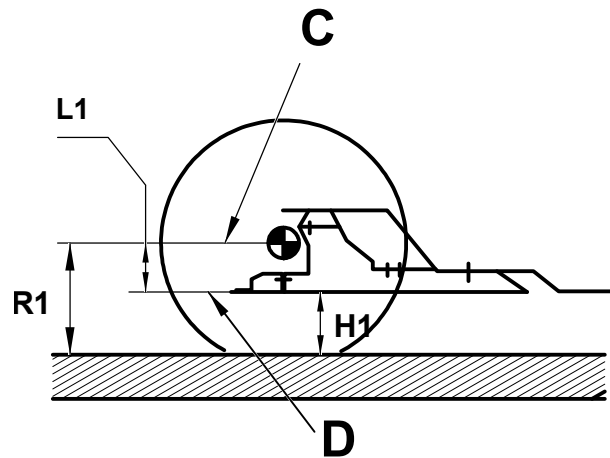
Vehicle.	Suspension piston Ø (in mm).	Anti-roll bar Ø (in mm).	Hydractive suspension.		Suspension sphere reference.		Hydraulic stop.
			Without.	With.	Right side.	L.H. side.	
1.6i.	40.	22.	X.		LC09.	LC59.	Without.
1.8i.							
1.8i 16V.							
2.0i.			X.		LC0C.	LC5C.	With.
				X.	LC0D.	LC5D.	
2.0i 16V except SC.CAR.			X.		LC0C.	LC5C.	
				X.	LC0D.	LC5D.	

2.0i 16V SC.CAR.	28.		X.	LC06.	LC56.	
Turbo CT except SC.CAR.	22.		X.	LC0D.	LC5D.	
Turbo CT SC.CAR.	28.		X.		LC5E.	
1.9D.	22.	X.		LC09.	LC59.	Without.
1.9 Turbo D.		X.		LC0C.	LC5C.	With.
			X.	LC0D.	LC5D.	
2.1 Turbo D.		X.		LC0C.	LC5C.	
			X.	LC0D.	LC5D.	

1.3 Data : Estate 96 Model Year

Vehicle.	Suspension piston Ø (in mm).	Anti-roll bar Ø (in mm).	Hydractive suspension.		Suspension sphere reference.		Hydraulic stop.
			Without.	With.	Right side.	L.H. side.	
1.8i.	40.	23.	X.		LC0C.	LC5C.	With.
2.0i.							
2.0i 16V.			X.		LC0D.	LC5D.	
				X.	LC0C.	LC5C.	
				X.	LC0D.	LC5D.	
Turbo CT.							
1.9 Turbo D.			X.		LC0C.	LC5C.	
			X.	LC0D.	LC5D.		

1.4 Checking the suspension heights



- Fig. : 2 -

Dimension " L1 " for checking the front height is measured between the flat section " D " of the front subframe and the centre line " C " of the road wheel.

This procedure enables eliminating all the variations in the measurements caused by :

- the various wheel fitments
- the vehicle load
- the wear and incorrect pressure setting of the tyres

$H1 = R1 - L1.$

H1 = front height (+7,-10) mm.

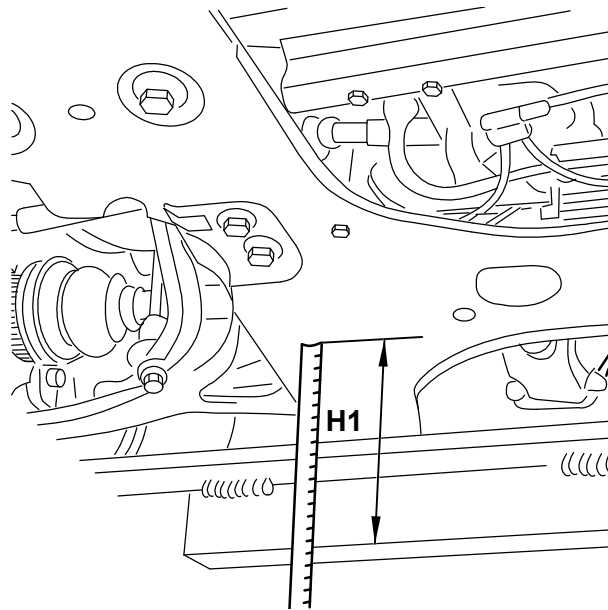
R1 = wheel radius (mm).

L1 = theoretical dimension between the flat section of the front subframe and the centre line of the road wheel.

Vehicle until the 96 Model Year.	L1 (mm).
All models , except SC.CAR.	121.
SC.CAR.	141.

Vehicle 96 Model Year.	L1 (mm).
1.6i - 1.8i - 1.8i 16V - 2.0i - 1.9D - 1.9 Turbo D (L.H.D.).	121.
Factory symbol (except for X1-8E and X1-7E).	

2.0i 16V except SC.CAR - Turbo CT - 1.9 Turbo D R.H.D. - 1.9 Turbo D (L.H.D.).	114.
Factory symbol : X1-8E and X1-7E - 2.1 Turbo D.	
2.0i 16V SC.CAR.	141.



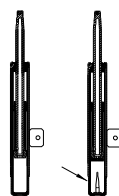
- Fig. : 3 -

The front height " H1 " is measured between the front subframe and the ground, on the driveshaft axis.

Checking and adjusting procedure : see the relevant operation.

1.5 Suspension unit

1.5.1 Stop



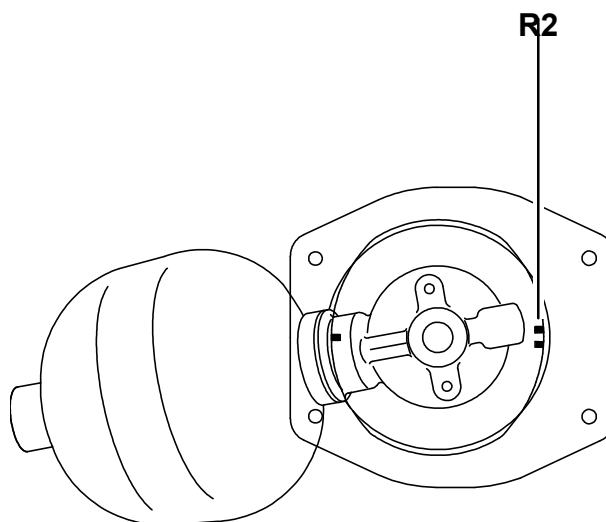
- Fig. : 4 -

Suspension cylinders :

- (A) without hydraulic stop
- (B) with hydraulic stop

1.5.2 Pneumatic unit support

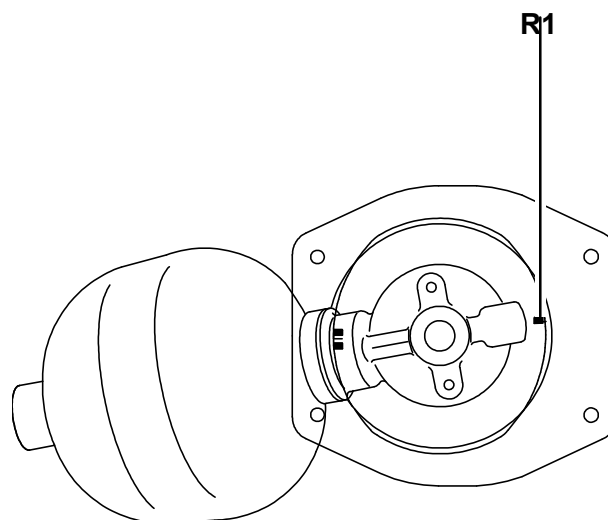
The castor angle is determined by the fitting direction of the pneumatic unit support.



- Fig. : 5 -

Manual steering.

Ref. mark R2 towards the rear of the vehicle (2 markings).



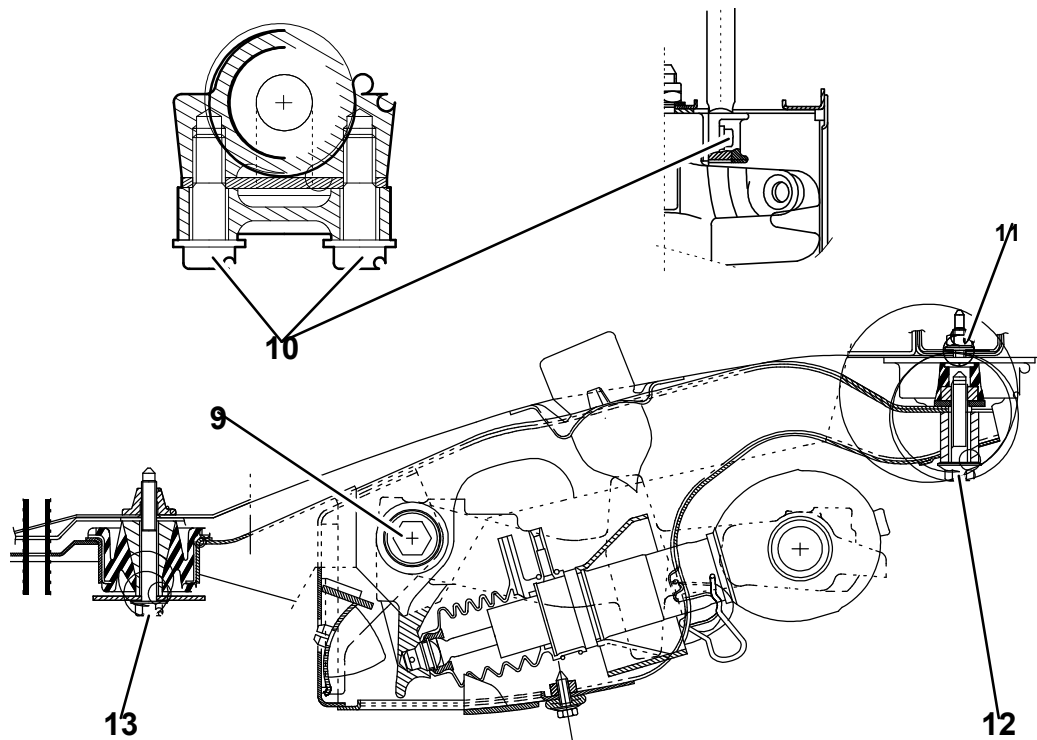
- Fig. : 6 -

Power assisted steering ; power assisted steering SC.CAR.

Ref. mark R1 towards the rear of the vehicle (1 marking).

2 Rear suspension

2.1 Saloon (prior to RPO No. 6778)



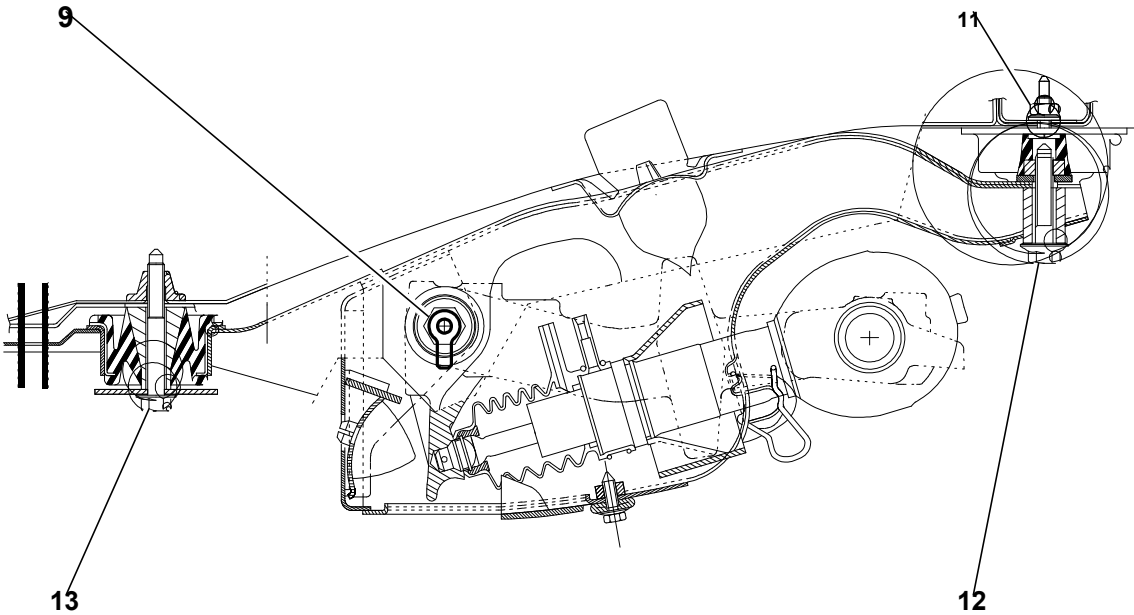
- Fig. : 7 -

Tightening torques :

- (9) arm shaft : 13 m.daN
- (10) anti-roll bar fixing : 9,5 m.daN
- (11) rear silent block fixing to bodyshell : 2,8 m.daN
- (12) subframe rear fixing : 11 m.daN (*)
- (13) subframe front fixing to bodyshell : 8 m.daN (*)

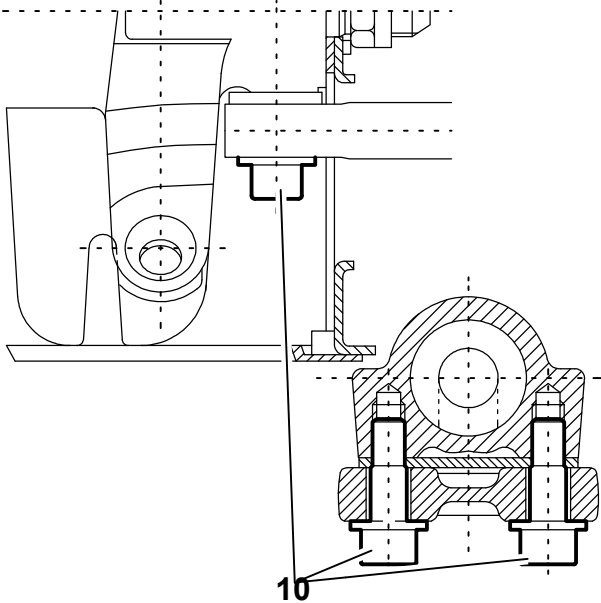
face and threads not greased.

2.2 All models (from RPO No. 6779)



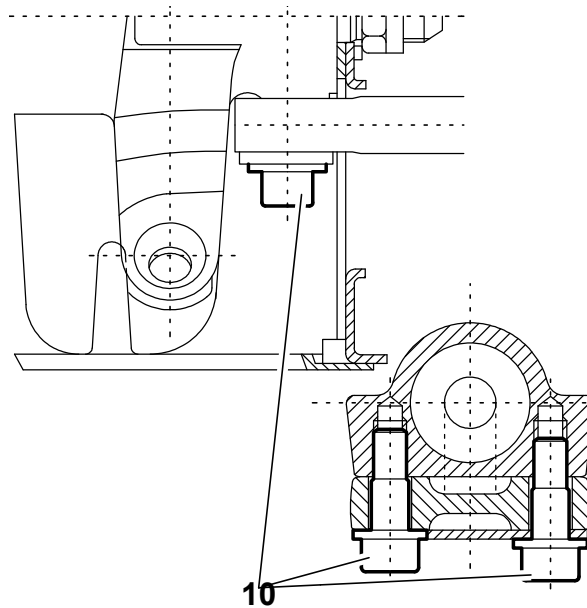
- Fig. : 8 -

Saloon.



- Fig. : 9 -

Estate.



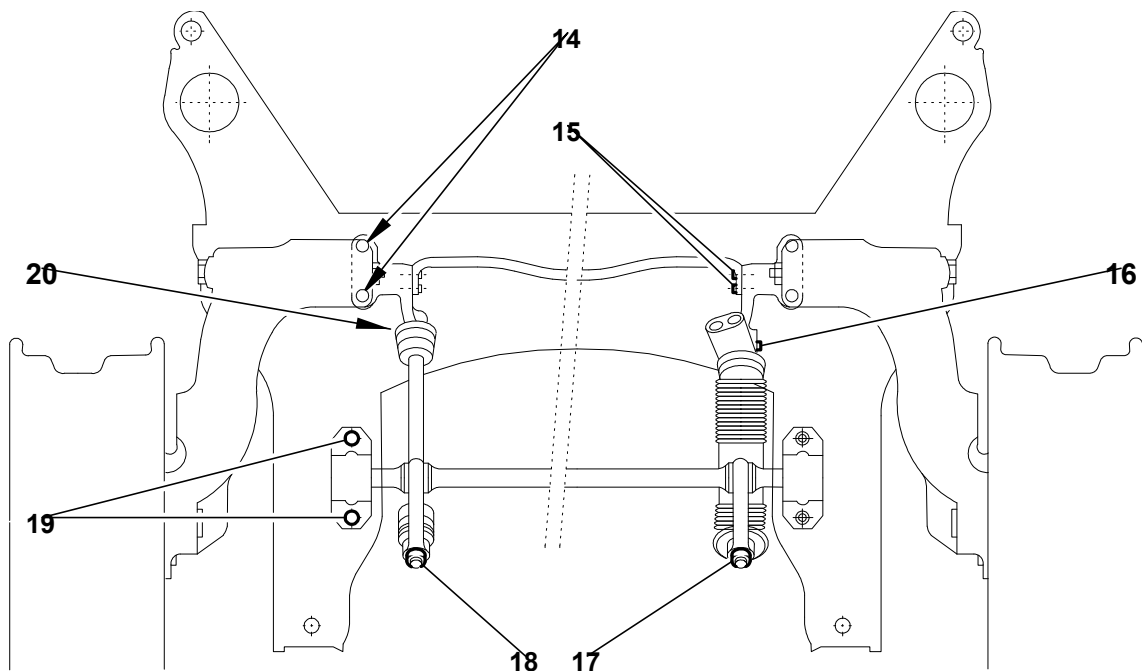
- Fig. : 10 -

Tightening torques :

- (9) arm shaft : 13 m.daN
- (10) anti-roll bar fixing : 9,5 m.daN
- (11) rear silent block fixing to bodyshell : 3,4 m.daN
- (12) subframe rear fixing : 11 m.daN (*)
- (13) subframe front fixing to bodyshell : 8 m.daN (*)

face and threads not greased.

2.3 Rear suspension SC.CAR



- Fig. : 11 -

Tightening torques :

- (14) connection bearing fixing : 9,5 m.daN
- (15) SC.CAR rear height control bar fixing : 2,2 m.daN
- (16) SC.CAR ram lower fixing : 10 m.daN
- (17) SC.CAR ram upper fixing : 6,5 m.daN
- (18) link rod upper fixing : 6,5 m.daN
- (19) anti-roll bar bearing fixing : 4,5 m.daN
- (20) link rod lower fixing : 6,5 m.daN

2.4 Data : saloon until Model Year 96

Vehicle.	Suspension piston Ø (in mm).	Anti-roll bar Ø (in mm).	Hydractive suspension.	
			Without.	With.
1.6.	35.	21.	X.	
1.8i.			X.	
2.0i.			X.	
				X.
1.9D.			X.	
1.9 Turbo D.			X.	

			X.
16v except SC.CAR.		22.	X.
SC.CAR.		25.	X.

2.5 Data : saloon from the 96 Model Year onwards

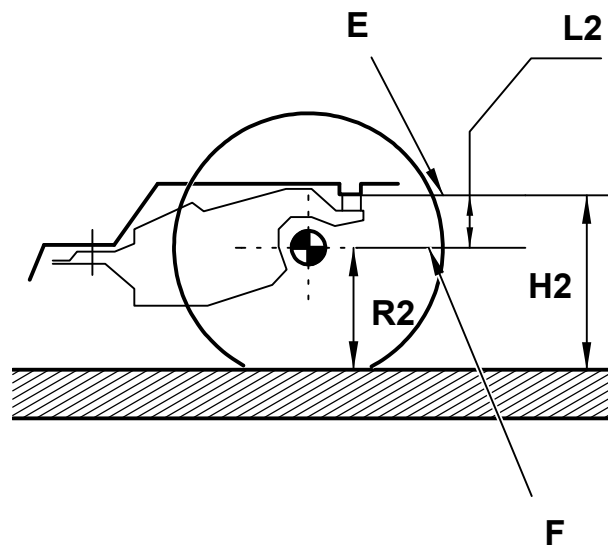
Vehicle.	Suspension piston Ø (in mm).	Anti-roll bar Ø (in mm).	Hydractive suspension.	
			Without.	With.
1.6i.	37.	21.	X.	
1.8i.				
1.8i 16V.				
2.0i.			X.	
2.0i 16V except SC.CAR.			X.	X.
				X.
2.0i 16V SC.CAR.		25.		X.
Turbo CT except SC.CAR.		23.		X.
Turbo CT SC.CAR.		25.		X.
1.9D.		21.	X.	
1.9 Turbo D.	X.			
			X.	
2.1 Turbo D.	23.	X.		
			X.	

2.6 Data : Estate 96 Model Year

Vehicle.	Suspension piston Ø (in mm).	Anti-roll bar Ø (in mm).	Hydractive suspension.	
			Without.	With.
1.8i.	40.	23.	X.	
2.0i.				
				X.

2.0i 16V.			X.	
Turbo CT.				X.
1.9 Turbo D.			X.	
				X.

2.7 Checking the suspension heights



- Fig. : 12 -

Dimension " L2 " for checking the rear height is measured between the surface " E " of the bodyshell bearing against the rear silent block, and the centre line " F " of the wheel.

This procedure enables eliminating all the variations in the measurements caused by :

- the various wheel fitments
- the vehicle load
- the wear and incorrect pressure setting of the tyres

$$H2 = R2 + L2.$$

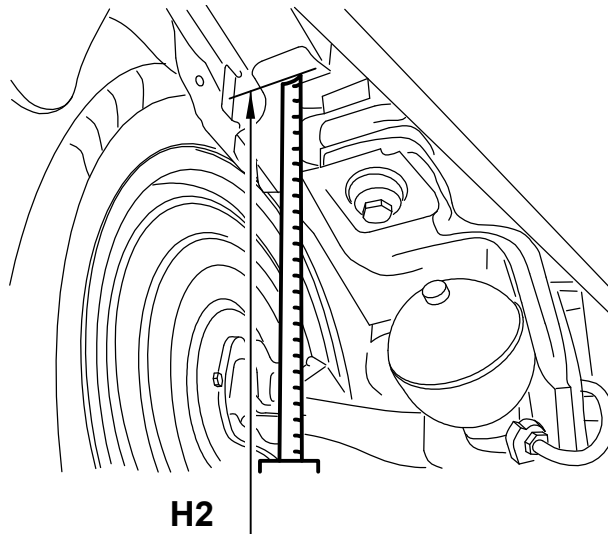
H2 = rear height (+7,-10) mm.

R2 = wheel radius (mm).

L2 = theoretical dimension between the bearing surface of the bodyshell and the centre line of the road wheel.

Vehicle until the 96 Model Year.	L2 (mm).
Except SC.CAR.	121.
SC.CAR.	141.

Vehicle 96 Model Year.	L2 (mm).
1.6i - 1.8i - 1.8i 16V - 2.0i - 1.9D - 1.9 Turbo D (L.H.D.). Factory symbol (except for X1-8E and X1-7E).	136.
2.0i 16V except SC.CAR - Turbo CT - 1.9 Turbo D R.H.D. - 1.9 Turbo D (L.H.D.). Factory symbol : X1-8E and X1-7E - 2.1 Turbo D.	144.
2.0i 16V SC.CAR.	116.

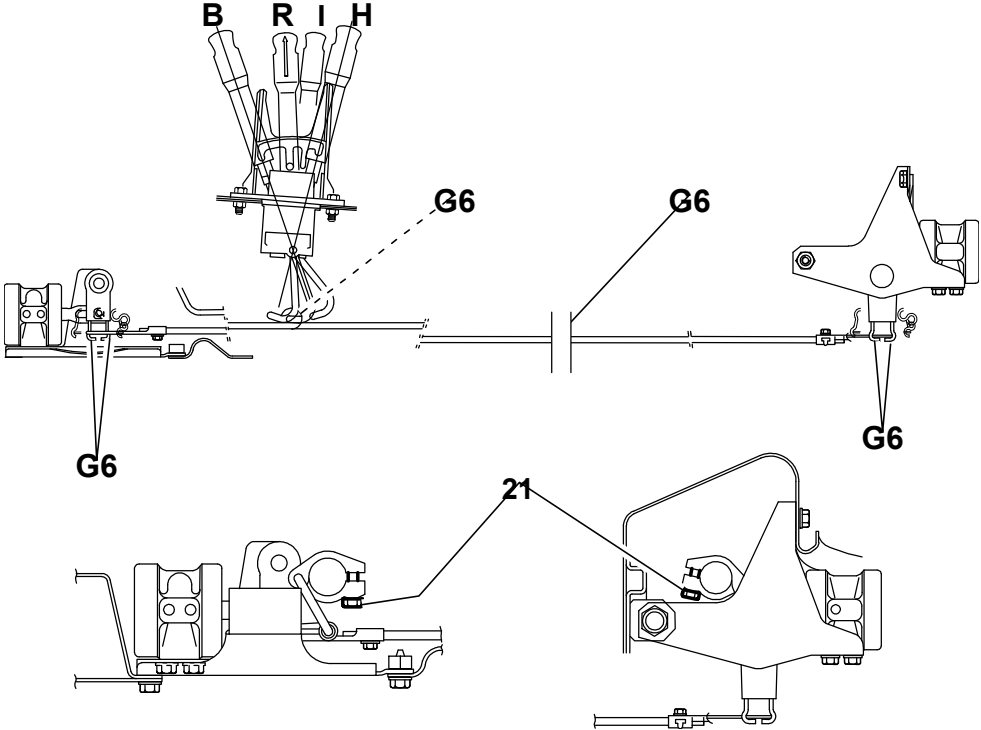


- Fig. : 13 -

The rear height " H2 " is measured between the ground and the surface of the bodyshell bearing against the rear silent block.

Checking and adjusting procedure : see the relevant operation.

3 Height control



- Fig. : 14 -

Tightening torque : (21) automatic control clamping collar - 1,5 m.daN.

Recommended product : TOTAL MULTIS grease.