

the new **CITROËN XANTIA** limited edition
Stateside

Technical Specification

Body Style	5 door
Engine	1.8i 16V
Cubic capacity (cc)	1761
Number of cylinders	4 in line
Max Power DIN (hp/rpm)	112/5500
Max Torque DIN (lb.ft/rpm)	114/4250

Economy Litres/100km (mpg)

Urban	12.2 (23.2)
Extra Urban	6.7 (42.2)
Combined	8.7 (32.5)

NB. Official Government test fuel consumption figures

Performance

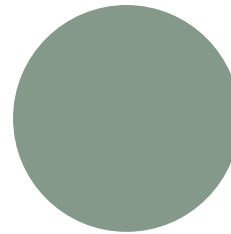
Maximum speed (mph)	121
0-62mph (secs)	10.8

Equipment Specification

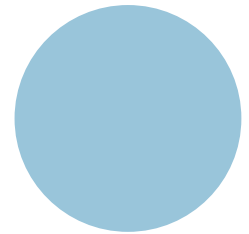
Power assisted steering	★
Air conditioning with automatic temperature control	★
Driver, front passenger and front lateral airbags	★
High frequency remote control central locking	★
Transponder immobiliser	★
Front seat belt pre-tensioners with force limiters	★
Fully painted bumpers, side mouldings and door mirror housings	★
Electric front windows	★
Front fog lamps	★
Tinted glass	★
Trafficmaster™ Oracle	★
Remote control RDS stereo radio/cassette with 6 speakers and CD autochanger	★
Electrically operated passenger door mirror	★
Rev counter and maintenance indicator	★
Digital clock with date and exterior temperature display	★
Driver's seat height and lumbar adjustment	★
Split folding rear seat	★
'Manhattan' velour/Alcantara® upholstery	★
Stateside badging	★

***On the Road Retail Price includes the following:**

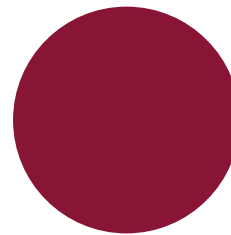
Xantia Stateside	Basic Price	VAT	Total Retail Price	Total 'On the Road' Retail
1.8i 16V 5 door	£12,076.60	£2,113.40	£14,190.00	£14,865.00



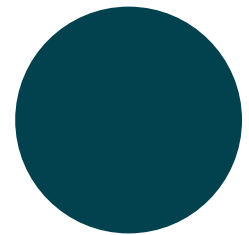
COOL GREEN METALLIC



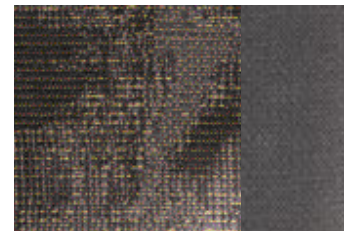
ORIGINAL BLUE METALLIC



DANTÉ RED METALLIC



EMERALD GREEN METALLIC



'MANHATTAN' VELOUR WITH ALCANTARA® UPHOLSTERY



CITROËN

K7157

Citroën U.K. Ltd., 221 Bath Road, Slough, Berkshire SL1 4BA.

NOTE: *'On the Road' price includes standard charges for delivery to dealer's premises, number plates, 12 months Road Fund Licence, and Government first registration fee worth £675. Every endeavour was made to ensure that the information contained in this leaflet was accurate at the date of going to press 16.11.98. The company however reserves the right, while preserving the essential characteristics of the model described and illustrated, to introduce at any time modifications, changes of details, equipment or accessories as may be considered necessary to improve the model described or for any reason of a constructional or operational nature. Every effort will be made to bring the leaflet up to date from time to time, but in order to avoid any misunderstandings any person interested should enquire of the company or its agents as to whether there have been material alterations since the date of the issue of the leaflet.

Designed and produced by Vernon Oakley Ltd., London